



GT-500 Laser Cleaning Machine

The appearance of GT-500W series is as follows:



Appearance of GT-500W series

The collocation list of GT-500W series is as follows:

Table2 collocation list of GT-500W series

Product type	Product model	Product collocation
Laser cleaning machine	GT-500W	<p>1. The cleaning host machine:</p> <ul style="list-style-type: none">◆ 7-inch display screen◆ B series cleaning head◆ 10m operation cable◆ Indicator red light◆ External control interface <p>2. One pair of lasers protective glasses.</p> <p>3. Replaceable protection front: include 5 protective lenses.</p>

1. Standard collocation

Supplies	Item pictures	quantity
Instruction manual		1 (standard)
interlock		1 (Available on request)
Protect glasses Quantities can be requested)		1 (standard)
protective lens.		5 (standard)
External control cable (external laser button)		1 (standard)
Power cord European standard American Standard Generally, the rear is changed to the carrier plug		1 (standard)

2. Optical characteristic parameters

Table4 Optical characteristic parameters of GT-500W series
laser cleaning machine

Equipment model	GT-500W
Average laser power	500W
Central wavelength	1064 nm
Fiber length	10m
Power regulation range	10%~100%, adjustable
Laser pulse frequency	20kHz ~ 4000kHz, adjustable
Laser line-width	X: 5mm ~ 120mm, adjustable Y: 5mm ~ 70mm, adjustable
Field mirror model	F254
Minimum bending radius of optical fiber	150mm
Instability of laser output	<5%
Cooling mode	Wind cooling
Polarization direction	arbitrarily
Guided laser function	have
Anti hyper reflexes	have
※The above parameters are for reference only, please refer to the actual situation	

3. General characteristic parameters

Table5 General characteristic parameters of GT-500W series laser cleaning machine

Equipment model	GT-500W
Net weight	56kg (Subject to actual conditions)
Laser head	1.4kg
Crate size	Length * width * height: 813.5mm *435.5mm * 530mm (subject to actual delivery)
Operation type	Hand-held
Supply voltage	AC 110-220±10%V
Mains frequency	50/60 Hz
Operating temperature range	0°C ~ 40°C
Storage temperature range	-10°C ~ 60°C
Power consumption @ 25 °C	< 4kW
※The above parameters are for reference only, please refer to the actual situation	

4. Equipment composition and specification

1、cleaning host machine

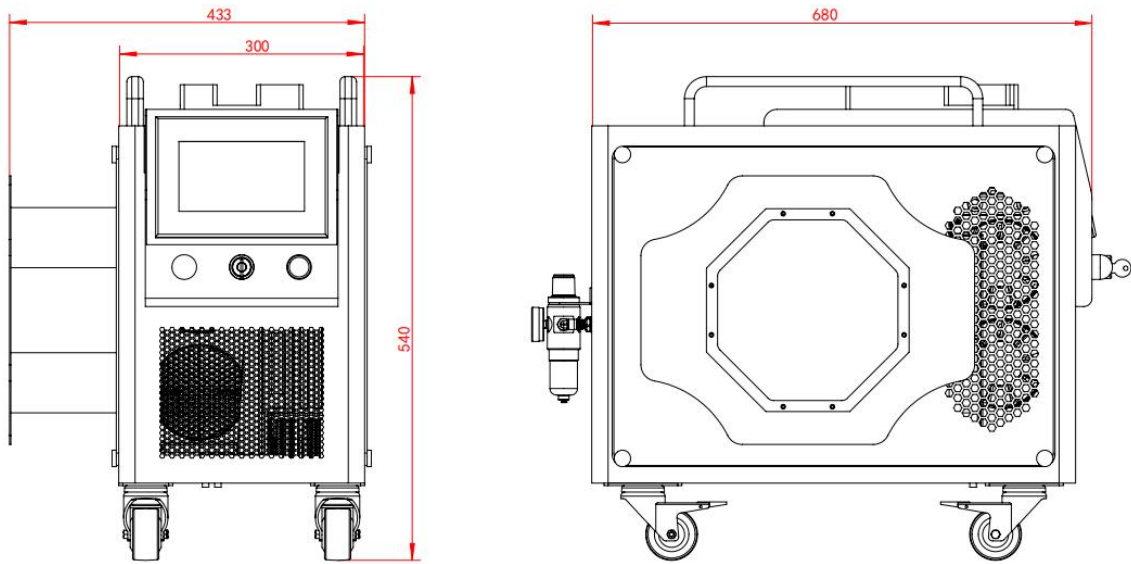
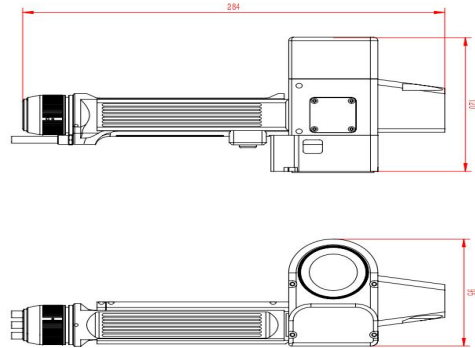
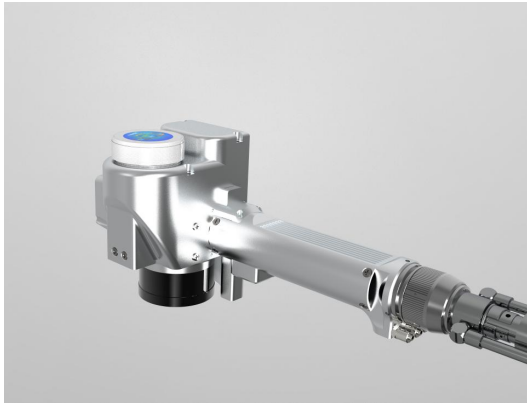



Diagram of GT-500W main engine (standard configuration,
dimensions subject to physical delivery)

2、Cleaning Head



Vertical light 2D cleaning head (knob screen)

Technical parameters	
Interface type	QBH
Applicable type	pulse
Laser wavelength	1064nm
Gun body dimensions	265mm*120mm*95mm
Max Wobble width	160mm
scan Frequency	5-150hz
Field mirror	F254 (standard) , F330, F420 etc. are optional
Cooling Way	Air and water cooled
Max air pressure	0.4Mpa~0.6Mpa
Weight	1.4kg
Working Mode	

Vertical light 2D cleaning head technical parameters

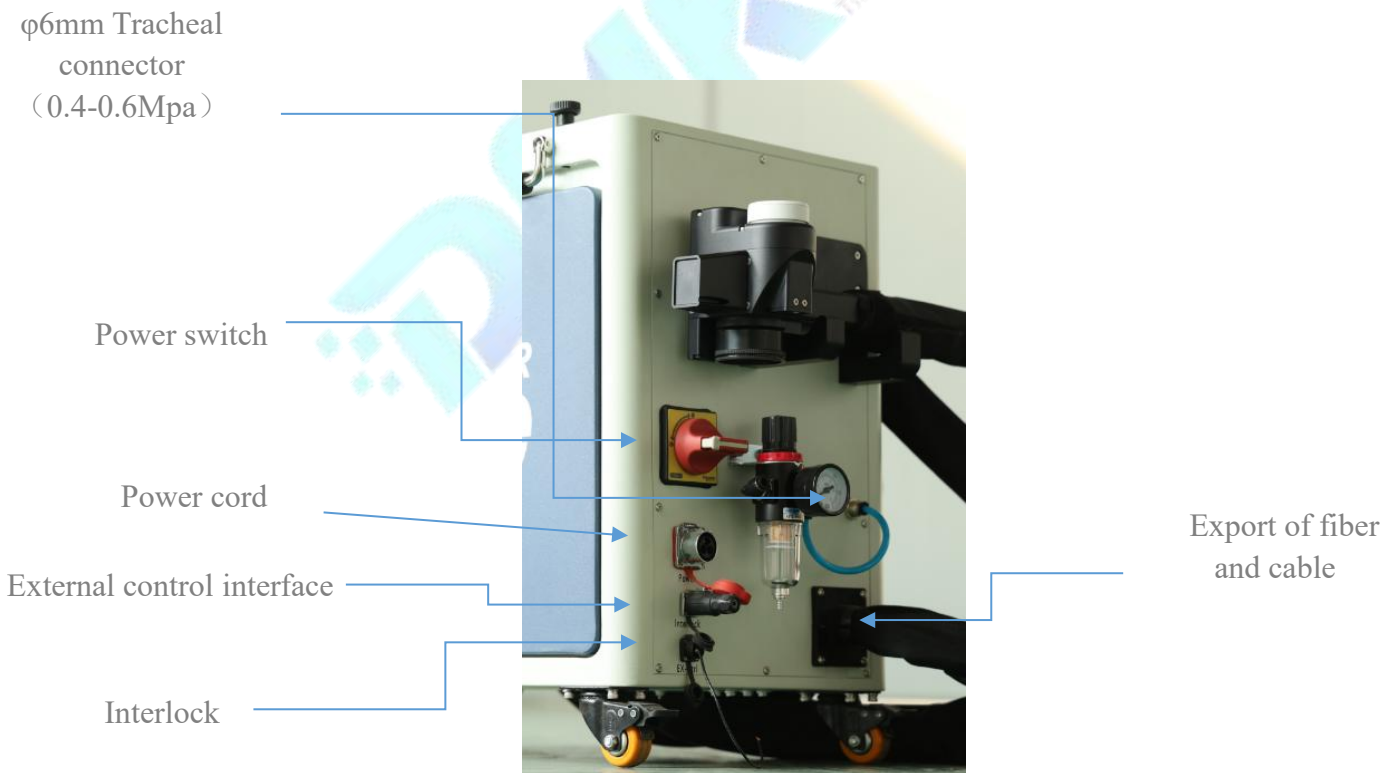
5. Introduction to operation buttons and panels

The operation buttons of GT-500 series host machine are as

follows:



Front operation panel of GT-500



back operation panel of GT-500